

CALVARY LUTHERAN CHURCH



Calvary Lutheran Church E-newsletter May 21, 2020



Pastor Ken's Pondering

"I rejoiced with those who said to me 'let us go to the house of the Lord.'" Psalm 122:1

We might now wish to rephrase this *"I rejoiced when the 'Safe at Home' order expired and I could go to the house of the Lord."* This pastor would say *"I rejoiced when they said I could plan a service for the house of the Lord."* Except...the question lingers in many minds *"should I go to the house of the Lord"*, and for our congregation and staff, *"should we make plans to welcome people again ... and how."* I write because the urge and liberty to resume public worship is tempered by the advisability of resuming public worship – the duty and delight of "remembering the sabbath day" tempered by concern for one's own wellbeing and the wellbeing of someone else if I do.

This is the phase of the *"Great Coronavirus Pandemic of 2020"* we are entering. Opening up the nation and our economy is a welcome and needed development for many. They express understandable words of relief. But for many, opening up means we're letting a virulent virus have more bodies to infect. They impart understandable words of caution. Which is why we need to approach this from the standpoint of "the body." Galatians 6:2 says; *"carry each other's burdens, and in this way, you will fulfill the law of Christ."* Galatians 6:10 says *"therefore, as we have opportunity, let us do good to all people, especially to those of the family of believers."*

Worship Resources

You can easily access our Home Worship Resources which includes the worship materials of an audio file of the service, the sermon and an order of worship that outlines the service. Click below.

Worship Resources

Faith Formation

Read what's happening in Faith Formation Ministry. Click below.

Faith Formation
Updates



Weekly Podcast

Have you checked out the new podcast that focuses on

In discerning if we should resume worship, we look to passages like this – where concern for the neighbor outweighs personal considerations. I want nothing more than to greet you from the front of the altar in worship, but I don't want to do something that would endanger you. Some of you are reluctant to return to worship

Click [HERE](#) to read the remainder of Pastor Ken's Pondering this week.

the Scripture readings for the upcoming weekend service? Check it out below!

PODCAST

WHAT YOU NEED TO KNOW IF YOU'RE COMING TO WORSHIP

**Worship will resume on May 23/24
with three service options:**

Saturday at 5:00 p.m.

Sunday at 8:30 a.m.

Sunday at 10:00 a.m.

We have taken many steps to ensure as safe of an environment as possible – but please use your own judgement in choosing to come. You must do what is most comfortable for you, as discussed in Pastor Ken's *Pondering* above.



As you may know, the Saturday evening worship is typically the least attended. Please consider this option if you are seeking a worship environment which may have fewer people.

We will also continue to offer the weekend worship and podcast materials via email as we have done since March.

Important changes that will be implemented this weekend:

- Face masks are strongly recommended. We will have a limited supply on hand.
- When you arrive at church, immediately proceed into the Sanctuary and do not congregate in the Narthex. Please practice social distancing from the moment you are on the church property to the time you leave, which includes the parking lot.
- Social distancing will be established in the Sanctuary with assigned pews for each service, designated by colored tags. Please sit **only** in the pew with the tag designated for that service. If you are not sitting with your family, observe the 6' distance between you and someone next to you (approximately two arm lengths).
- All materials have been removed from the pews except bottles of hand sanitizer. We were not able to obtain
- The Altar Guild followed strict sanitation practices when filling the cups. We will be using hosts instead of bread.
- All servers will be wearing masks and will wash their hands in the Sacristy prior to serving communion. Pastor Ken will bless the elements, offering the "body of Christ" and "blood of Christ" only once to the congregation so there will be no speaking during the serving of communion.
- Communion will be done by station, releasing one side of the Sanctuary at a time (right center, left center, right wing, left wing). Ushers will be releasing each row to proceed to the altar down the center aisle. Please observe the 6' distancing while you walk down the aisles (unless you are with your

- sanitizer wipes; if that is your preference, please bring your own.
- All touch points such as pews and door handles will be wiped down between each service.
- We will have music, however there will be no singing. There will be no sharing of peace during the service. We will not be passing baskets for the Offering; however, a basket will be at the back of the church to place your offering, either when you enter or leave the Sanctuary. We will not be collecting the blue Attendance cards.
- We will not invite the children to the altar for the Children's Message on Sunday; however, we would encourage families to sit closer to the front (in the appropriate pews) so they will be able to connect with the message.
- The nursery will be closed. If your child needs a break from worship, you may take him/her to the Narthex but observe social distancing if there are any other parents there with their child(ren).

- immediate family).
- Communion will be "self serve" from the communion trays and the cups will be adequately spaced to ensure contact is not made with more than one cup. Please take the wine cup closest to you and avoid reaching across the tray. You will deposit the used cup into a basket.
- Following the Benediction, the congregation will be dismissed row by row, beginning in the back of the church, during the closing music. Please do not gather in the Narthex and leave the building immediately. Fellowship Hall will be closed.
- To avoid cross contamination, you will not be receiving a bulletin; nametags and all materials in the Narthex have been removed.
- The rest rooms will be sanitized between services and only the restrooms near the Narthex will be available.
- Doors to the Sanctuary will remain open during the service.
- Please do not congregate in the parking lot or Narthex before or after worship.

It's about our family

Prayer Requests

New prayer requests: Mary Dresser (Donna Schroeder's daughter-in-law's sister)

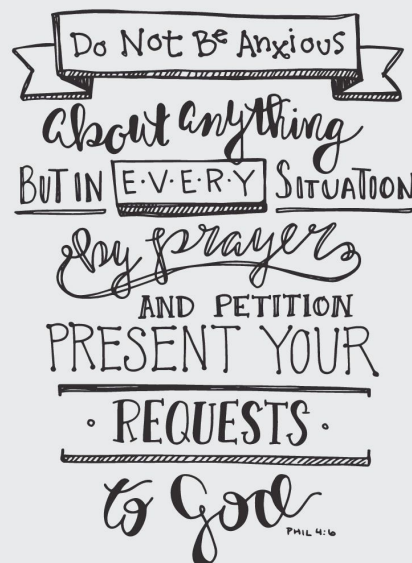
Ongoing short-term prayer requests: Mary (friend of Jane Taufner); Shirl Gordon (friend of Cindy Rooks); Jeanette Ketelsen; Pat Treutelaar; Janet Zastrow; John Ebert (brother of Jonni Roush); David Voight (friend of Jonni Roush); Doug Haus (brother-in-law of Chet Elliott); Marcia and Jerry Borgie (friends of Grace Gunnlaugsson); Lynn Schoenfeld (friend of Lydia Trudell); and Tom Kestly (husband of Judy Kestly).

Serving in the Military: Dan Berger (serving in the U.S. Marines); Nicole Wahlgren (serving in the U.S. Army National Guard); Kyle Pierce (son of Karen and Keith Pierce, serving in the U.S. Army); Alex Olson (U.S. Air Force, grandchild of Ardath Olson); Karmen Thomas (friend of Tony and Krista Dentice serving in the U.S. Army); all military chaplains; and all veterans suffering with post-traumatic stress disorder (PTSD).

For our students of all ages, teachers and parents with the current online school programs. There is stress, discouragement and lack of involvement. Pray that they can all persevere for another four weeks to completion. Also prayers for those who hoped to celebrate graduations and find it has to be done in a new way.

For All Men and Women Serving: Police Officers, Firefighters, Health Care workers and First Responders.

Serving in the mission field: Our NALC missionaries and missionaries everywhere bringing the



gospel to the ends of the Earth.

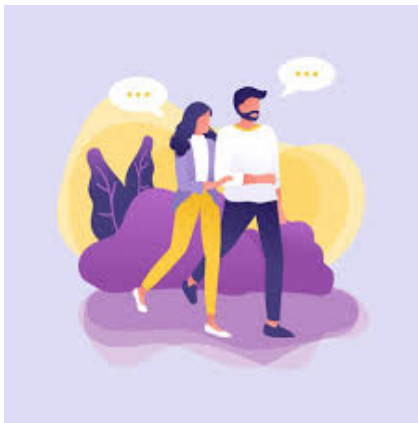
If you have any new prayer requests, please contact the church office at 262.786.4010 or via email to office@calvarylc.com.

Happy Birthday!

Doug Ranger, 5/22
Donna Ziegler, 5/22
Janet Zastrow, 5/23
Andy Schatz, 5/24
Gunnar Zipp, 5/25
Dale Altmin, 5/26
Xavier Griesse, 5/26
Tom Jenke, 5/26

Happy Anniversary!

Bill and Shirley Jordan, 5/21 (65 years)
Bruce and Ruth Steffens, 5/21 (54 years)
Judy and Tom Kestly, 5/30 (39 years)
Chris and Leah Morris, 5/30 (22 years)



NEW! Monthly Feature

Sharing Your Faith - A "How To" Series

-- First Steps --

Evangelism. You want me to be part of this? Whoa, uh, er, I'm not a pastor. I haven't gone to seminary or been trained in how to talk with people about Christ and about our church. I wouldn't be comfortable doing this. I don't really know much about the Bible or what would I say.

And that's okay! Don't think of it as "professional" evangelism. Think of it as one person walking with another. Think of it as one person talking with another over time and in comfortable settings. That is how it is best accomplished. You already have a lot to talk about to potential people who might be interested in learning more about Christ or our church. We're a friendly community with an excellent pastoral staff and youth and music programs. But many people with whom you will engage will be most influenced by your experiences, your stories and your friendliness.

Each month we will bring you ideas and suggestions on how to best to reach out and help bring people to Christ. Some of the thoughts will come from experienced professionals, some from our church staff and some from us who have actually done this ... yes, in real life! We intend to make this an enjoyable experience for Calvary members as well as for those you come across. They may be people who have left another church, or are looking for a church with more substance, or haven't been connected to a church for many years. Beside the information you'll receive in upcoming issues of the CONNECTIONS, there will also be workshop opportunities for training in these methods. Pastor Nelson has developed many training tools for building your confidence and communication skills.

So, fasten your seat belts and get ready for a great ride!



**Weekly Men's Breakfast
Resumes on Wednesdays
May 27 at 8:00 a.m.**

**Maxim's Restaurant
18025 W. Capitol Drive**

The restaurant seating has been reconfigured in compliance with social distancing requirements. Note new start time!



**Monthly Men's Ministry
Gathering
Thursday, May 28
6:00 p.m.
Fellowship Hall**

Come for fellowship, food and devotion time. Dinner will be provided. Social distancing will be respected and practiced. If you have any questions, please reach out to Ernie Kretschmann at kretschmann@att.net.

Mission & Outreach



As you know, Calvary Lutheran Church is a congregation of the North American Lutheran Church. The **NALC Disaster Response Fund** provides resources for natural disaster victims in the United States.

When a disaster occurs (such as the hurricanes of Texas and Florida, flooding in Nebraska and South Dakota, and most recently the tornadoes in Tennessee) the funds are used to:

- alleviate human suffering;
- provide transitional assistance; and
- enable those affected to begin the rebuilding process

In addition to funds the NALC Disaster Response team collects and distributes items



**DISASTER
RESPONSE**

**Listen to an audio
announcement**

We are collecting new or clean used blankets, quilts or bedding of any kind, sleeping bags, health kits, new or used adult and children's Bibles and school backpacks (see description below of items needed for school backpack kits). There are collection tubs set out in the Narthex for these items. Click the button below for a printable list of items being collected.

that can be given out to disaster victims.

In the fall of 2018, a semi truck stopped at Calvary and we were able to send relief items to hurricane victims at that time.

In June of 2020, another pick-up trailer is coming through Wisconsin, and Calvary will be a collection site. The items will be delivered to the national warehouse in Caldwell, Ohio and distributed across the USA when disaster strikes.

These items and your financial contributions are most appreciated by those who suffer loss of housing as a result of natural disasters across the United States. Thank you for your generous response to all these efforts which help to alleviate suffering in Jesus' name.

NALC Collection Items

NALC Disaster Response Collections

The office is open Monday-Friday from 8 a.m. until noon.
The door closest to the office will be open during those hours.
Please check in with the office staff so we know you are in the building.

To see a printable list of items being collected, click [HERE](#).

ONE cloth bag or backpack
FOUR notebooks of wide or college-ruled paper, no loose-leaf paper
ONE blunt scissors
ONE ruler
ONE pencil sharpener
SIX new pencils
ONE eraser,
PLUS: -----
TWELVE sheets assorted construction paper &
ONE box of 16 or 24 crayons for elementary
OR ONE Calculator for high school (**LABEL Handle**)



SCHOOL KIT



ANY Size Quilt or Blanket including fabric printed with religious, patriotic, & military symbols.



QUILTS & BLANKETS

HEALTHCARE KIT

ONE bath towel
ONE wash cloth
TWO bars of soap, in original wrapping
ONE toothbrush
ONE pack of dental floss
ONE tube of toothpaste (two if sample size)
ONE comb
ONE deodorant



SCHOOL KITS

QUILTS/BLANKETS

HEALTH CARE
KITS

Work Clothing Collection

Our friends at **BASICS of Milwaukee** have partnered with Employ Milwaukee, an organization that is dedicated to connecting Milwaukee area job seekers with education, training, and resources to obtain employment in high demand industry sectors while supporting regional economic growth by working closely with businesses to prepare an educated and skilled workforce.

Calvary is collecting men's and women's clothing that could be worn to a job interview or for work. These could be dressier clothes or casual clothes, as not everyone works in a professional setting.

If you've cleaned out your closets during the many hours we've spent at home the last couple months, and would like to donate clothing for this cause, please drop off your donated items in the collection tub in the Narthex. We will collect through the month of May.



A Few Reminders ...



You may have recently received an email from Pastor Ken asking you for help with an errand or project. You will **never** get an email request from Pastor Ken, or any member of the church staff, ultimately asking for the purchase of gift cards. If you doubt the validity of any email from Pastor or staff, please feel free to call the church office to verify.

Our Stephen Ministers are here for you!

Stephen Ministers are congregation members trained by Stephen Leaders to offer high-quality, one-to-one Christian care to people going through tough times. A Stephen Minister usually provides care to one person at a time, meeting with that person once a week for about an hour.

If you, or someone you know, could benefit from this important ministry, please contact Scott or Peggy Langelin at 262.853.0018.



**Many members of
Calvary Lutheran Church
choose to give
electronically.**



Why do they do this? For several reasons:

1. Convenient — don't need to remember to write a check. Can be established for recurring contributions. And, you can designate for general giving, Mission of the Month, etc.
2. Safe — today's systems require secure systems. Calvary utilizes the services of VANCO, a highly rated payment processing company focused on non-profits.
3. Can use Credit Cards as a payment option.
4. Green — less paper utilization, no checks & no envelopes needed.
5. Easy to do — see the two methods below.

Method One — for payment from your checking or savings account.

Complete a Simply Giving document and include a voided check or savings deposit slip. The document can be obtained from the table in the Narthex or by calling the office. Once established, changes are easily made by calling Cindy Rooks in the office.

Method Two — for payment by credit card, checking or savings.

You can access the Calvary Lutheran Church VANCO website through this [ONLINE GIVING LINK](#) or via the online giving link at the bottom of the church's website (www.calvarylc.com). Once on the VANCO site, you'll need to create an account and complete the information requested.

If you have any questions or concerns, please contact Cindy Rooks at 262.786.4010 or via email to finance@calvarylc.com.

Online Giving Link

CALVARY LUTHERAN CHURCH www.calvarylc.com

Regular office hours are Monday-Friday, 8am-noon 262.786.4010

Questions or comments? Email Sue Rowe at communications@calvarylc.com