

CALVARY LUTHERAN CHURCH



Calvary Lutheran Church E-newsletter April 23, 2020



Pastor Ken's Pondering

In [Luke 24:13-35](#) Jesus approaches two men on the evening of his resurrection and asks them a question - 'What are you discussing among yourselves?'

They were discussing...him! They were discussing how deflated they were that he'd been crucified, when right up to the last minute, "they had hoped" that he would have "redeemed his people". By that they could have only meant one thing - freedom from occupation by a foreign power - Rome.

Like any "what if" conversation any of us have had, it would have been ladled with questions - 'why didn't I?' being one of them. That's the origin of guilt or regret.

Click [HERE](#) to read the remainder of Pastor Ken's Pondering this week.

Worship Resources

You can easily access our Home Worship Resources which includes the worship materials of an audio file of the service, the sermon and an order of worship that outlines the service. Click below.

[Worship Resources](#)

Faith Formation

Read what's happening in Faith Formation Ministry. Click below.

[Faith Formation Updates](#)

Facebook

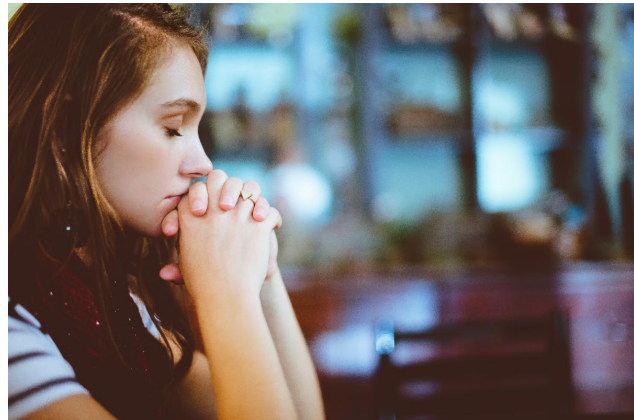
Have you checked out Calvary's Facebook page? Click below.

[Facebook](#)

Prayer Requests

Sympathy and God's peace to: The family and friends of Calvary member Kay Marshall who passed away on April 18, 2020; and to Tom and Sue Sadowsky on the passing of Sue's nephew Collin Kettleson on April 17.

New prayer requests: Please continue to pray for all our doctors, nurses, healthcare workers, first responders and those who are working on the front lines during the COVID19 pandemic.



Ongoing short-term prayer requests:

Alecia Huettl, Jeanette Ketelsen; Keith Pierce; Pat Treutelaar; Janet Zastrow; John Ebert (brother of Jonni Roush); David Voight (friend of Jonni Roush); Doug Haus (brother-in-law of Chet Elliott); Milo (nephew of Lynnae and Caleb Douglas); Marcia and Jerry Borgie (friends of Grace Gunnlaugsson); Lynn Schoenfeld (friend of Lydia Trudell); and Tom Kestly (husband of Judy Kestly).

Serving in the Military: Dan Berger (serving in the U.S. Marines); Nicole Wahlgren (serving in the U.S. Army National Guard); Kyle Pierce (son of Karen and Keith Pierce, serving in the U.S. Army); Alex Olson (U.S. Air Force, grandchild of Ardath Olson); Karmen Thomas (friend of Tony and Krista Dentice serving in the U.S. Army); all military chaplains; and all veterans suffering with post-traumatic stress disorder (PTSD).

For All Men and Women Serving: Police Officers, Firefighters and First Responders.

Serving in the mission field: Our NALC missionaries and missionaries everywhere bringing the gospel to the ends of the Earth.

If you have any new prayer requests, please contact the church office at 262.786.4010 or via email to office@calvarylc.com.



HAPPY BIRTHDAY!

Bruce Steffens, 4/23
Jerry Wittmus, 4/24
Lee Tyne, 4/25
Jenni Swanson, 4/27
Mary Ellen Thiede, 4/27
Matt Powers, 4/29
RoJean Holler, 5/1
Beverly Lawson, 5/2
Ava Morris, 5/2

HAPPY ANNIVERSARY!

Mary Ellen and Tom Thiede, 4/24 (44 years)
Jan and Chuck Lukasik, 4/25 (39 years)
Norene and Chuck Giuliani, 4/26 (40 years)
Ed Ramthun and Catherine Way, 4/27 (18 years)
Diane and Dean Schmelzer, 5/2 (39 years)

Stephen Ministers are here for you!

Stephen Ministers are congregation members trained by Stephen Leaders to offer high-quality, one-to-one Christian care to people going through tough times. A Stephen Minister usually provides care to one person at a time, meeting with that person once a week for about an hour.

If you, or someone you know, could benefit from this important ministry, please contact [Scott or Peggy Langelin](#) at 262.853.0018.



Mission & Outreach



Our Mission and Outreach Committee has several ways you can still participate during this Safer at Home time. April's Mission of the Month is **Compassion International**, and we invite you to support that mission this month along with your regular offering.

You can listen to a message from Dave DeBruine of Compassion International regarding Calvary's Mission of the Month for April.

[Click here for an audio message from Dave DeBruine, Compassion.](#)

Any online giving designated to the Mission of the Month will be applied to Compassion International. However, if you missed your opportunity to support the **Lutheran Bible Translators** because of fewer worship opportunities in March, you can still contribute. Checks for the March mission of the month, Lutheran Bible Translators, can still be sent to the church office with "March Mission of the Month" in the memo or include a note.

The Committee would like to thank you for your continued faithful support of our varied projects throughout the year.

Thank you for your generosity!

NALC Disaster Response Collection

Empty backpacks are available in the Narthex.

The office is open Monday-Friday from 8 a.m. until noon. The door closest to the office will be open during those hours.

Please check in with the office staff so we know you are in the building.

In April and May we are collecting for the NALC Disaster Response. All materials that are collected during this drive will be distributed to victims of hurricanes, tornados and other natural disasters in the United States. We hope to have a trailer come through in June to collect the items for the warehouse.

There is a special need at this time for backpacks for school kids. There are empty backpacks at church waiting to be filled. Also, if you have a clean used backpack in good condition, it could be used as well. Along with the backpacks there is a need for calculators for high school students (any kind of hand-held calculator). There is a basket in the Narthex to collect those separately.

School Kit Components:

- Four (4) notebooks of wide- or college-ruled paper (no loose-leaf paper)
- One (1) pair of blunt scissors
- One (1) ruler
- One (1) pencil sharpener
- Six (6) new pencils



- One (1) eraser
- Twelve (12) sheets of construction paper, assorted colors
- One (1) box of 16 or 24 crayons
- One (1) cloth bag or backpack (*empty backpacks are in the Narthex*)

A Few Reminders ...

Many members of Calvary Lutheran Church choose to give electronically.



Why do they do this? For several reasons:

1. Convenient — don't need to remember to write a check. Can be established for recurring contributions. And, you can designate for general giving, Mission of the Month, etc.
2. Safe — today's systems require secure systems. Calvary utilizes the services of VANCO, a highly rated payment processing company focused on non-profits.
3. Can use Credit Cards as a payment option.
4. Green — less paper utilization, no checks & no envelopes needed.
5. Easy to do — see the two methods below.

Method One — for payment from your checking or savings account.

Complete a Simply Giving document and include a voided check or savings deposit slip. The document can be obtained from the table in the Narthex or by calling the office. Once established, changes are easily made by calling Cindy Rooks in the office.

Method Two — for payment by credit card, checking or savings.

You can access the Calvary Lutheran Church VANCO website through this [ONLINE GIVING LINK](#) or via the online giving link at the bottom of the church's website (www.calvarylc.com). Once on the VANCO site, you'll need to create an account and complete the information requested.

If you have any questions or concerns, please contact Cindy Rooks at 262.786.4010 or via email to finance@calvarylc.com.

[Online Giving Link](#)



Stay Connected Via Conference Call

Did you know that you can still have your Bible Study, Small Group session, Book Club or Committee meeting remotely? Calvary has an account with a group conference call company that will allow you to conduct a phone conference call with many individuals. It's easy and free! It is not a video conference service; but simply a conference call where all parties are connected via phone.

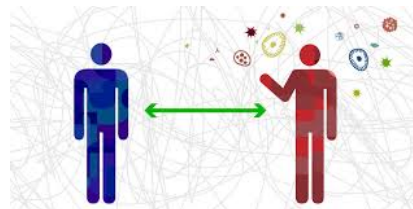
We have one conference access number; however, it can only be accessed by one group at a

time. If you'd like to use this service, please contact the office at 262.786.4010 or via email to office@calvarylc.com, and let us know the date and time of your call. (Please note that at this time the conference number is currently booked on Tuesdays from 9:30-10:30 a.m. for office staff meetings.)

Questions? Contact Cindy Rooks at 262.786.4010 or via email at finance@office.com.

Can you sew? Do you need a mask during our time of Social Distancing?

We have set up a small table outside Door #1 at the NW corner of the church by the office with pre-cut fabric and instructions to make a mask. You can pick up a kit or two - the fabric, which has been donated by the Calvary Quilters, is placed into plastic bags in two clear shoe boxes. Copies of the Instructions are on a clipboard - which has been placed in a plastic bag to protect from dampness or you can click the link below to see the pattern. If you are going to make more than one, please only take one instruction sheet.



Additional fabric can be obtained from the office - please contact Cindy Zilske at 262.786.4010 or via email: office@calvarylc.com.

We will get through this together!

[Mask pattern](#)

CALVARY LUTHERAN CHURCH www.calvarylc.com

Regular office hours are Monday-Friday, 8am-noon 262.786.4010

Questions or comments? Email Sue Rowe at communications@calvarylc.com